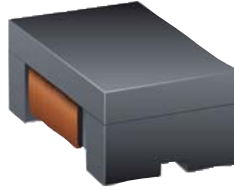


# New Product Release

INDUCTIVE COMPONENTS



October, 2012

## **Bourns Releases Common Mode Chip Inductor Model SRF4532 Series**

Bourns® Inductive Components Product Line introduces the new [Model SRF4532 Series](#) of bifilar wire-wound, ferrite core, common mode chip inductors. The Model SRF4532 Series offers high impedance over a broad frequency range to suppress unwanted EMI signals. This product is designed for common mode conductive noise filtering on data/signal lines, CAN-bus, telecommunication devices and consumer electronics.

The Model SRF4532 Common Mode Chip Inductors are constructed in 1812 size (4.5 x 3.2 x 2.8 mm) which have 50  $\Omega$  minimum common mode impedance over the frequency range of 1 MHz to 1 GHz and reach the peak impedance of 20K  $\Omega$ . The rated DC current ranges from 200 – 300 mA and the operating temperature is from -40 °C to +125 °C.

The Bourns® Model SRF4532 Common Mode Chip Inductors are packaged 500 pieces/reel with minimum order quantities of 1000 pieces. Samples are available upon request.

Please visit the Bourns website at [www.bourns.com](http://www.bourns.com) for additional product details. If you have any questions, please contact [Bourns Customer Service](#).