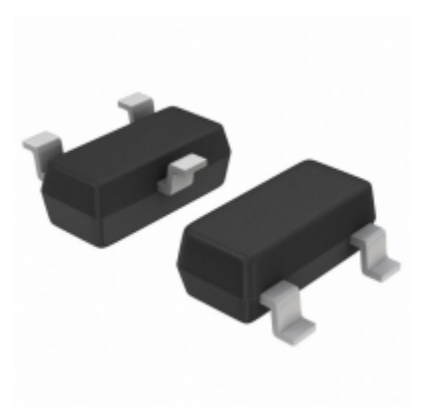


<b>IRLML6402TRPBF</b>	
부품 번호	<a href="#">IRLML6402TRPBF</a>
제조사	<a href="#">International Rectifier (Infineon Technologies)</a>
기술	MOSFET P-CH 20V 3.7A SOT-23
가능 수량	102000 pcs in stock
데이터 시트	
IRLML6402TRPBF Price	<a href="#">온라인으로 가격 및 리드 타임 요청</a> or Email us: <a href="mailto:Info@ariat-tech.com">Info@ariat-tech.com</a>


[견적](#)

IRLML6402TRPBF의 기술 정보			
제조업체 부품 번호	<a href="#">IRLML6402TRPBF</a>	범주	<a href="#">이산 반도체 제품</a>
제조사	<a href="#">International Rectifier (Infineon Technologies)</a>	기술	MOSFET P-CH 20V 3.7A SOT-23
패키지 / 케이스	Tape & Reel (TR)	가능 수량	102000
연속	HEXFET®	과학 기술	MOSFET (Metal Oxide)
작동 온도	-55°C ~ 150°C (TJ)	실장 형	Surface Mount
패키지 / 케이스	TO-236-3, SC-59, SOT-23-3	제조업체 장치 패키지	Micro3™/SOT-23
전력 소비 (최대)	1.3W (Ta)	FET 유형	P-Channel
FET 특징	-	소스 전압에 드레인 (Vdss)	20V
전류 - 25 ° C에서 연속 드레인 (Id)	3.7A (Ta)	이드의 Vgs @ RDS에서 (최대)	65 mOhm @ 3.7A, 4.5V
아이디 @ VGS (일) (최대)	1.2V @ 250µA	게이트 차지 (Qg) @ Vgs	12nC @ 5V
입력 커패시턴스 (Ciss) (최대) @ Vds	633pF @ 10V	드라이브 전압 (최대 Rds On, 최소 Rds On)	2.5V, 4.5V
Vgs (최대)	±12V	포장	Tape & Reel (TR)

IRLML6402TRPBF 102000 PC 신규 및 기존 재고 있음, IRLML6402TRPBF 재고, 데이터 시트, PDF, 재고를 [Ariat-Tech.com](http://Ariat-Tech.com) 온라인에서 확인하십시오. 주문 IRLML6402TRPBF International Rectifier (Infineon Technologies) 보증 및 신뢰성 있음. RFQ IRLML6402TRPBF : [Info@Ariat-Tech.com](mailto:Info@Ariat-Tech.com)

IRLML6402TRPBF 관련 부품				
영상	부품 번호	기술	제조사	수량
	<a href="#">IRLML6401PBF</a>	IRLML6401PBF IR	IR	223 pcs
	<a href="#">IRLML6401TR</a>	MOSFET P-CH 12V 4.3A SOT-23	International Rectifier (Infineon Technologies)	83895 pcs
	<a href="#">IRLMLS6802TR</a>	IRLMLS6802TR IR	IR	2766 pcs
	<a href="#">IRLML9301GTRPBF</a>	IRLML9301GTRPBF IR	IR	23243 pcs
	<a href="#">IRLMS1503</a>	IRLMS1503 IR	IR	12000 pcs
	<a href="#">IRLML9303TRPBF</a>	MOSFET P-CH 30V 2.3A SOT-23-3	International Rectifier (Infineon Technologies)	66900 pcs
	<a href="#">IRLML6802TR</a>	IRLML6802TR IR	IR	6000 pcs
	<a href="#">IRLML9244TRPBF</a>	IRLML9244TRPBF IR	IR	42000 pcs
	<a href="#">IRLML6802TRPBF</a>	IRLML6802TRPBF VB	VB	10000 pcs
	<a href="#">IRLML9301TRPBF</a>	MOSFET P-CH 30V 3.6A SOT-23-3	International Rectifier (Infineon Technologies)	97830 pcs
	<a href="#">IRLML6402TR(EEA)</a>	IRLML6402TR(EEA) IR	IR	590 pcs
	<a href="#">IRLML6402TR</a>	MOSFET P-CH 20V 3.7A SOT-23	International Rectifier (Infineon Technologies)	24320 pcs
	<a href="#">IRLML6402GTRPBF</a>	MOSFET P-CH 20V 3.7A SOT-23-3	International Rectifier (Infineon Technologies)	20150 pcs
	<a href="#">IRLML8244TRPBF</a>	IRLML8244TRPBF IR	IR	9000 pcs
	<a href="#">IRLML6401TRPBF</a>	MOSFET P-CH 12V 4.3A SOT-23	International Rectifier (Infineon Technologies)	475000 pcs
	<a href="#">IRLML6402</a>	IRLML6402 Original	Original	60000 pcs
	<a href="#">IRLMS1503TR</a>	MOSFET N-CH 30V 3.2A 6-TSOP	International Rectifier (Infineon Technologies)	15000 pcs
	<a href="#">IRLML6402TRFPBF</a>	IRLML6402TRFPBF IR	IR	21000 pcs
	<a href="#">IRLML6402TRBF</a>	IRLML6402TRBF IR	IR	1000 pcs
	<a href="#">IRLML6401TR(F5K9T)</a>	IRLML6401TR(F5K9T) IR	IR	2450 pcs

IC 칩 및 IGBT 모듈 - 핫 재고 부품 번호				
<a href="#">IRLML6244GTRPBF</a>	<a href="#">IRLML6244TRPBF</a>	<a href="#">IRLML6246GTRPBF</a>	<a href="#">IRLML6246TRPBF</a>	<a href="#">IRLML6302</a>
<a href="#">IRLML6302GTRPBF</a>	<a href="#">IRLML6302TRPBF</a>	<a href="#">IRLML6302TR</a>	<a href="#">IRLML6302TRPBF</a>	<a href="#">IRLML6344</a>
<a href="#">IRLML6344TRPBF</a>	<a href="#">IRLML6346</a>	<a href="#">IRLML6346TR</a>	<a href="#">IRLML6346TRPBF</a>	<a href="#">IRLML6401</a>
<a href="#">IRLML6401GTRPBF</a>	<a href="#">IRLML6401GTRPBF</a>	<a href="#">IRLML6401GTRPBF</a>	<a href="#">IRLML6401TR</a>	<a href="#">IRLML6401TRPBF</a>
<a href="#">IRLML6402</a>	<a href="#">IRLML6402GTRPBF</a>	<a href="#">IRLML6402TR</a>	<a href="#">IRLML6402TRBF</a>	<a href="#">IRLML6402TRFPBF</a>
<a href="#">IRLML6802TR</a>	<a href="#">IRLML6802TRPBF</a>	<a href="#">IRLML8244TRPBF</a>	<a href="#">IRLML9244TRPBF</a>	<a href="#">IRLML9301GTRPBF</a>
<a href="#">IRLML9301TRPBF</a>	<a href="#">IRLML9303TRPBF</a>	<a href="#">IRLMLS6802TR</a>	<a href="#">IRLMS1503</a>	<a href="#">IRLMS1503TR</a>
<a href="#">IRLMS1503TRPBF</a>	<a href="#">IRLMS1503TRPBF</a>	<a href="#">IRLMS1902</a>	<a href="#">IRLMS1902TR</a>	<a href="#">IRLMS1902TRPBF</a>
<a href="#">IRLMS1902TRPBF</a>	<a href="#">IRLMS2002TR</a>	<a href="#">IRLMS2002TRPBF</a>	<a href="#">IRLMS2002TRPBF</a>	<a href="#">IRLMS2002TRPDF</a>
<a href="#">IRLMS2005TRPBF</a>	<a href="#">IRLMS2803TRPBF</a>	<a href="#">IRLMS4502TR</a>	<a href="#">IRLMS4502TRPBF</a>	<a href="#">IRLMS4802TR</a>